

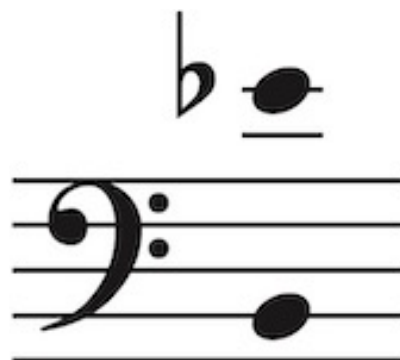
ART SONG TRANSPOSITIONS

Henry Purcell (1659-1695)

What power art thou, who from below

Song of the Cold Genius | from *King Arthur*, Z. 628 | Librettist: John Dryden (1631-1700)

in C minor



What power art thou, who from below ¹

John Dryden

Song of the Cold Genius | from *King Arthur*, Z. 628

Henry Purcell

Slow

Musical notation for the first system, measures 1-4. The score is in G minor (two flats) and common time (C). It features a grand staff with treble and bass clefs. The right hand plays chords and moving lines, while the left hand provides a steady bass line.

Musical notation for the second system, measures 5-8. The notation continues from the first system, maintaining the same key signature and time signature.

COLD GENIUS

Musical notation for the third system, measures 9-11. This system includes the vocal line in the bass clef with lyrics: "What pow'r art thou who from below hast made me". The piano accompaniment is in the grand staff. The word "simile" is written above the vocal line. A piano (*p*) dynamic marking is present at the start of the piano part.

Musical notation for the fourth system, measures 12-14. The vocal line continues with lyrics: "rise unwillingly and slow from beds of everlasting". The piano accompaniment continues in the grand staff.

Musical notation for the fifth system, measures 15-17. The vocal line concludes with lyrics: "- last - - - ing snow?". The piano accompaniment continues in the grand staff, ending with a forte (*f*) dynamic marking.

18

See'st thou not how stiff how stiff and won - d'rous

21

old far far un - fit to bear the

23

bit - ter cold

25

I can scarce - ly move or draw my breath can scarce - ly

28

move _____ and draw _____ my breath? _____ Let me

30

let me let me freeze _____ a - gain _____ Let me

32

let me freeze _____ a - gain to death _____ let me let me let me

34

stentando

freeze _____ a - gain to death.