

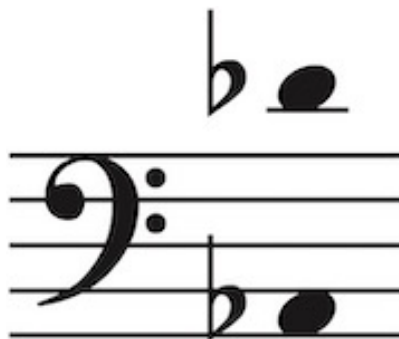
ART SONG TRANSPOSITIONS

George Frideric Handel (1685-1759)

Leave me, loathsome light

from *Semele*, HWV 58 | Librettist: William Congreve (1670-1729)

in D-flat major



Edited by Dr. Jonathan Edward Mann
©2024 ArtSongTranspositions.com

Leave me, loathsome light

William Congreve

from *Semele*, HWV 58

George Frideric Handel

Andante

The piano introduction consists of two staves in 6/4 time, marked Andante. The key signature has three flats (B-flat, E-flat, A-flat). The music features a slow, steady bass line in the left hand and a more active treble line in the right hand, with some grace notes and slurs.

SOMNUS

5

Leave me,

p

The first vocal line (bass clef) begins at measure 5 with a whole note rest, followed by a half note G2, and then a whole note G2. The piano accompaniment continues with a steady bass line and chords in the treble.

9

leave me, loath - some light! re - ceive me, re -

The second vocal line (bass clef) begins at measure 9 with a half note G2, followed by a half note G2, then a half note G2, and a half note G2. The piano accompaniment continues with a steady bass line and chords in the treble.

13

-ceive me, si - lent night, re - ceive me, si - lent

The third vocal line (bass clef) begins at measure 13 with a half note G2, followed by a half note G2, then a half note G2, and a half note G2. The piano accompaniment continues with a steady bass line and chords in the treble.

17

night! loath - some light, leave me, loath - some

21

light, re - ceive me, re - ceive me, si - lent

25

night, si - lent night!

29

Le - the, why does thy lin - g'ring

p

33

cur - rent cease? oh mur - mur, mur - mur,

37

mur - mur me a - gain to peace, oh

40

mur - mur me a - gain to peace!