

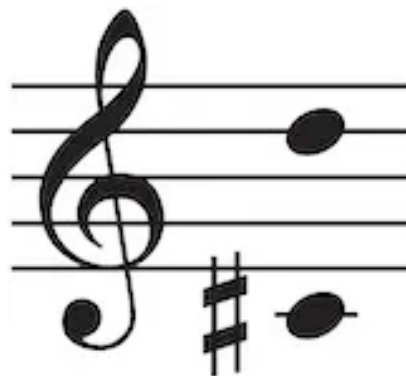
ART SONG TRANSPOSITIONS

Stefano Donaudy (1879-1925)

Perchè dolce, caro bene

Poet: Alberto Donaudy (1880-1941)

in D minor



Edited by Dr. Jonathan Edward Mann
©2023 ArtSongTranspositions.com

Perchè dolce, caro bene

Alberto Donaudy

Stefano Donaudy

Allegro moderato

The piano introduction consists of two staves. The right hand starts with a melody of eighth notes, marked with accents and a forte (*f*) dynamic. The left hand provides a harmonic accompaniment with chords and moving lines. The piece concludes with a piano (*p*) dynamic marking.

sost. un poco

This system contains the first line of the song. The vocal line begins at measure 5 with a piano (*p*) dynamic. The lyrics are: "Per - chè dol - ce, ca - ro be - ne stiz - zo - set - ta / Se - ti par - lo, non m'a - scol - ti; se - ti guar - do,". The piano accompaniment features a melody in the right hand and a bass line in the left hand, with a *dolce* marking and a piano (*pp*) dynamic. A *sost. un poco* marking is present at the end of the system.

a tempo

This system contains the second line of the song. The vocal line begins at measure 8 with an *a tempo* marking. The lyrics are: "sei con me, dac - chè sa - i le du - re pe - ne / guar - di in giù; ma non guar - do, e al - lor ti vol - ti;". The piano accompaniment continues with a melody in the right hand and a bass line in the left hand, both marked *a tempo*.

2

dim. e allarg.

ritard. un poco

mf

11

che nel cor sof - fr'io per te? Mor - di - mi! Ba - cia - mi!
 ma non par - lo, e par - li tu!

dim. e allarg. *ritard. un poco* *mf*

14

Bat - ti - mi! Ab - brac - cia - mi! Ah! pie - tà! pie -

p *p cresc.*

16

- tà! pie - tà! O ti pren - di ser - vi - tù,

meno f sost. *col canto* *f sost.*

19

o mi ren - di li - ber - tà!

a tempo mp affrett. *mp affrett.* *f*