

# ART SONG TRANSPOSITIONS

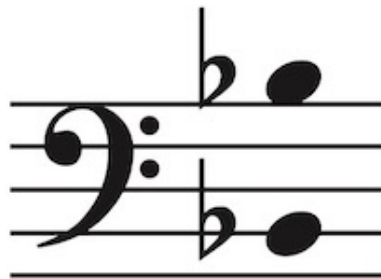
Art Songs and Arias in Any Key

Edward MacDowell (1860-1908)

# The Sea

No. 7 from 8 Songs, Op. 47 | Poet: William Dean Howells (1837-1920)

in B-flat major



# The Sea

William Dean Howells

No. 7 from 8 Songs, Op. 47

Edward MacDowell

Broadly, with rhythmic swing

*mf*

One sails a way to sea, to sea, One

*mf*

3 stands on the shore and cries; The ship goes down the world,

*increase* *ff*

6 and the light On the sul - len wa - ter

*ff*

2  
9

*ppp* *p* *ppp*

dies. The whis - per - ing shell is mute, And

13

*f* *ff*

af - ter is e - vil cheer; She shall stand on the

16

*p* *pp*

shore and cry in vain, in vain,

19

*ritard.* *pp a tempo*

Ma - ny and ma - ny a year But the state - ly wide - winged

*ritard.* *a tempo* *pp*

22

ship Lies wrecked, Lies wrecked on the un - known deep; Far

25

un - der, dead in his cor - al bed, The lov - er lies a -

*increase*

28

- sleep, Far un - der, dead in his cor - al bed, The

*pp* *broader*

31

lov - er lies a - sleep a - sleep.

*ritard.* *ppp*