

ART SONG TRANSPPOSITIONS

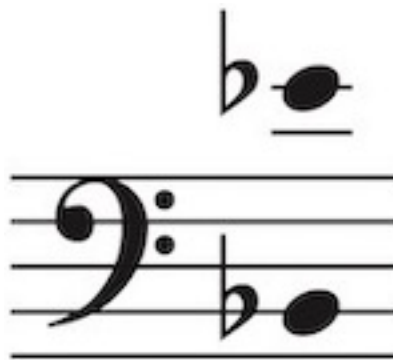
Art Songs and Arias in Any Key

Johann Sebastian Bach (1685-1750)

Betrachte, meine Seel

No. 19 from *Johannespassion*, BWV 245 | Librettist: Anonymous

in E-flat major



Edited by Dr. Jonathan Edward Mann
©2022 ArtSongTranspositions.com

Betrachte, meine Seel

No. 19 from *Johannespassion*, BWV 245

Johann Sebastian Bach

Adagio

Be - trach - te, mei - ne

3
Seel, mit ängst - li - chem Ver - gnü - gen, mit bit - trer Lust und

5
halb be - klemm - tem — Her - zen dein höch - stes Gut in Je - su

Schmer - zen, wie dir auf Dor - nen, so ihn ste - chen, die

Him - mels - schlüs - sel - blu - men blühn! Du

kannst viel sü - sse Frucht von sei - ner Wer - mut bre - chen, drum

sieh ohn Un - ter - lass auf ihn, auf ihn, drum sieh ohn

14

Un - ter - lass auf ihn, ohn Un - - -

This system contains measures 14 and 15. The vocal line is in the bass clef with a key signature of two flats. The piano accompaniment consists of a right-hand part in the treble clef and a left-hand part in the bass clef. The lyrics are: "Un - ter - lass auf ihn, ohn Un - - -".

15

- - ter - lass, drum sieh ohn Un - ter - lass auf

This system contains measures 15 and 16. The vocal line continues in the bass clef. The piano accompaniment continues with the right hand in the treble clef and the left hand in the bass clef. The lyrics are: "- - ter - lass, drum sieh ohn Un - ter - lass auf".

16

ihn!

This system contains measure 16. The vocal line is in the bass clef and ends with a fermata. The piano accompaniment features a more active right hand in the treble clef with sixteenth-note patterns, while the left hand in the bass clef has a steady eighth-note accompaniment. The lyrics are: "ihn!".