

# ART SONG TRANSPOSITIONS

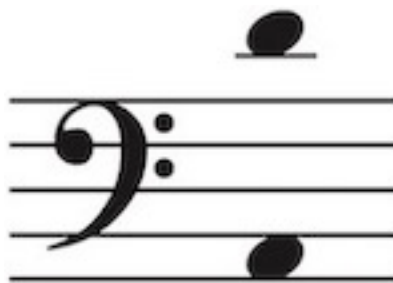
Art Songs and Arias in Any Key

Johann Sebastian Bach (1685-1750)

# Betrachte, meine Seel

No. 19 from *Johannespassion*, BWV 245 | Librettist: Anonymous

in D major



Edited by Dr. Jonathan Edward Mann  
©2022 ArtSongTranspositions.com

# Betrachte, meine Seel

No. 19 from *Johannespassion*, BWV 245

Johann Sebastian Bach

Adagio

Be - trach - te, mei - ne

*pp*

Detailed description: This system contains the first two measures of the piece. It features a vocal line in the bass clef and a piano accompaniment in the grand staff (treble and bass clefs). The key signature is one sharp (F#) and the time signature is common time (C). The piano part begins with a *pp* dynamic and consists of a steady eighth-note accompaniment in the bass and a more active melody in the treble.

3  
Seel, mit ängst - li - chem Ver - gnü - gen, mit bit - trer Lust und

Detailed description: This system contains measures 3 and 4. The vocal line continues with the lyrics. The piano accompaniment maintains its rhythmic pattern, with some harmonic changes in the treble part.

5  
halb be - klemm - tem Her - zen dein höch - stes Gut in Je - su

Detailed description: This system contains measures 5 and 6. The vocal line concludes the phrase. The piano accompaniment provides a final harmonic support for the vocal line.

Schmer - zen, wie dir \_\_\_\_\_ auf Dor - nen, so ihn ste - chen, die

Him - mels - schlüs - sel - blu - men blü - hen! Du

kannst viel sü - sse Frucht von sei - ner Wer - mut bre - chen, drum

sieh \_\_\_\_\_ ohn Un - ter - lass auf ihn, auf ihn, drum sieh ohn \_\_\_\_\_

14

Un - ter - lass auf ihn, ohn Un - - -

This system contains measures 14 and 15. The vocal line (bass clef) has lyrics: "Un - ter - lass auf ihn, ohn Un - - -". The piano accompaniment features a treble clef with chords and a bass clef with a steady eighth-note bass line.

15

- - ter - lass, drum sieh ohn Un - ter - lass auf

This system contains measures 15 and 16. The vocal line (bass clef) has lyrics: "- - ter - lass, drum sieh ohn Un - ter - lass auf". The piano accompaniment continues with chords in the treble and eighth notes in the bass.

16

ihn!

This system contains measures 16 and 17. The vocal line (bass clef) has the lyric "ihn!". The piano accompaniment features a treble clef with chords and a bass clef with a rhythmic eighth-note pattern.