

ART SONG TRANSPOSITIONS

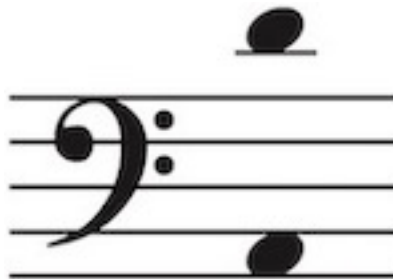
Art Songs and Arias in Any Key

Johannes Brahms (1833-1897)

Minnelied

No. 5 from 5 Songs, Op. 71 | Poet: Ludwig Hölty (1748-1776)

in G major



Edited by Dr. Jonathan Edward Mann
©2022 ArtSongTranspositions.com

Minnelied

Ludwig Hölty

Johannes Brahms

No. 5 from 5 Songs, Op. 71

Sehr innig, doch nicht zu langsam

The piano introduction consists of two staves in 3/4 time, key of D major. The right hand features a series of chords and moving lines, while the left hand plays a steady eighth-note accompaniment. The dynamic marking is *mf*.

Measures 5-8 of the song. The vocal line is in the bass clef, and the piano accompaniment is in the grand staff. The lyrics are: "Hol - der klingt der Vo - gel - sang, wenn die En - gel - rei -". The dynamic marking is *p*.

Measures 9-11 of the song. The vocal line continues with the lyrics: "- ne, die mein Jüng - lings - herz be - zwang, wan -". The piano accompaniment provides harmonic support.

Measures 12-14 of the song. The vocal line concludes with the lyrics: "- delt durch die Hai - ne." The piano accompaniment ends with a final chord in the right hand and a sustained bass line.

14

17

Rö - ter blü - hen Tal und Au, grü - ner wird der Wa -

p

21

- sen, wo die Fin - ger mei - ner Frau Mai -

24

- en - blu - men — la - sen.

27

Oh - ne sie ist al - les tot, welk sind

p

30

Blüt und Kräu - ter: und kein Früh - lings - a - bend -

ff

33

-rot dünkt mir schön und hei - ter.

36

Trau - te, min - nig - li - che Frau, wol - lest

39

nim - mer flie - hen, dass mein Herz, gleich die - ser

42

Au, mög in Won - ne blü - hen, mög in

45

Won - ne blü - hen!

dolce

48

ritard.

dim.

51

p